

## PEOPLE AND HOUSEHOLDS

Size of city



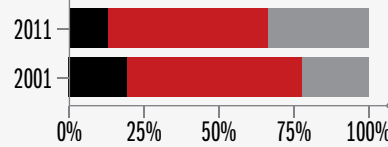
Population density in 2011



Of all nine cities, Msunduzi has the highest average number of people per household and the highest percentage of traditional dwellings.

|      | Growth     |                |  |
|------|------------|----------------|--|
|      | Population | No. households | Average number of people per household |
| 2011 | 618 536    | 163 993        | 3.77                                   |
| 2001 | 552 837    | 130 292        | 4.24                                   |
| 1996 | 518 640    | 117 149        | 4.43                                   |

### Dwelling types



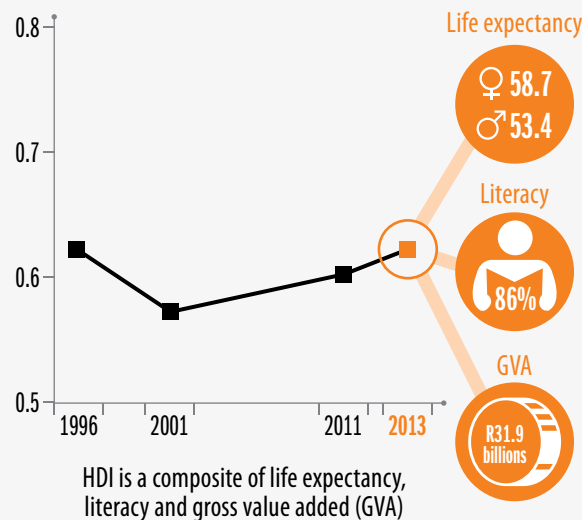
- Informal
- Formal
- Traditional

Go to StepSA.org to see maps on how population density changes across the city.

## SOCIAL FABRIC

Msunduzi has the highest levels of poverty of all the cities.

### Human development index (HDI)

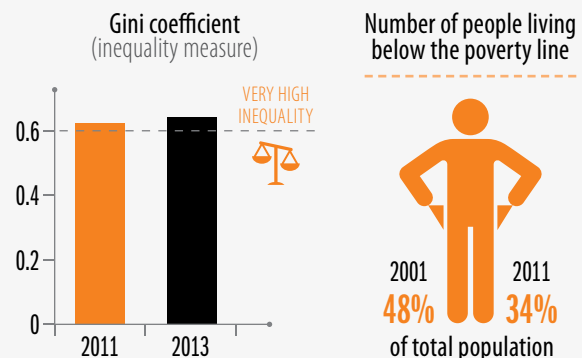


### Highest education level 2011



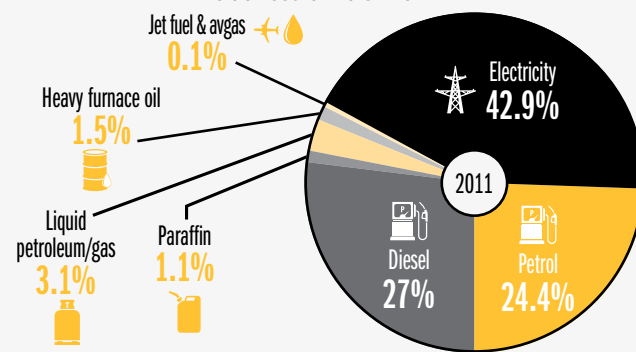
Urban safety is important for a city's social fabric; go to SCODA to access urban safety data for Msunduzi.

### Levels of poverty

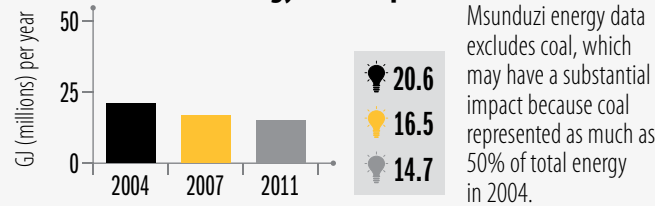


## SUSTAINABILITY

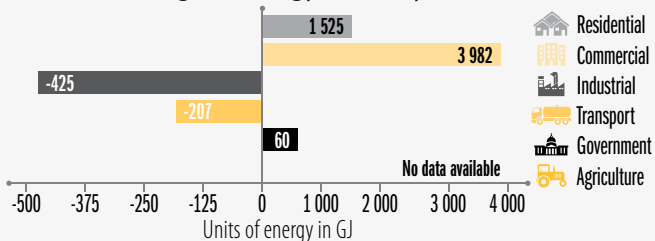
### Sources of fuel 2011



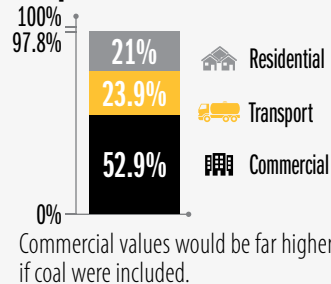
### Energy consumption



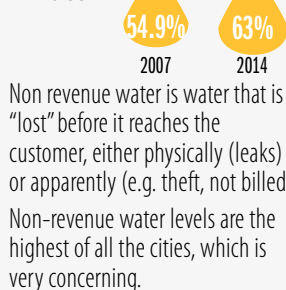
### Change in energy intensity 2007–2011



### Emissions: top three sectors in 2015

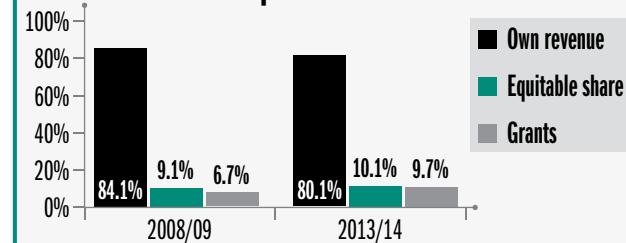


### Non revenue water

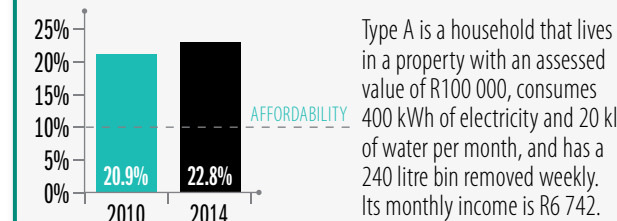


## CITY FINANCE

### Municipal revenue sources

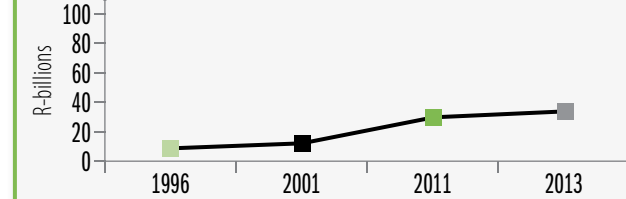


### Affordability of municipal bills for type A households (municipal bill as % of benchmark income)



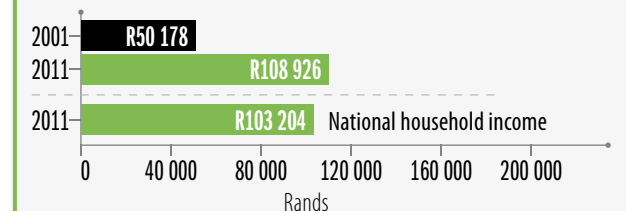
## ECONOMY

### Gross value added (GVA)



### Average household income

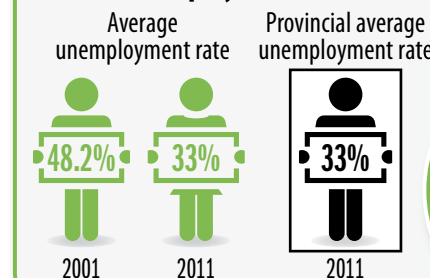
Average household income has increased in Msunduzi, but municipal bills for Type A households are the least affordable of all nine cities.



### Cost of living (based on a bundle of goods)

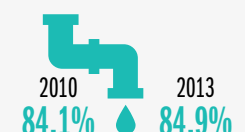


### Unemployment rate

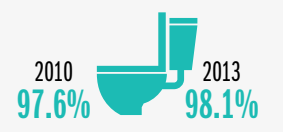


The economy is growing, but unemployment is extremely high and the cost of living has increased significantly.

## SERVICE DELIVERY



of households have access to piped water inside dwelling/yard



of households have access to sanitation services\*  
\* includes access to flush toilets, VIPs and pit toilets

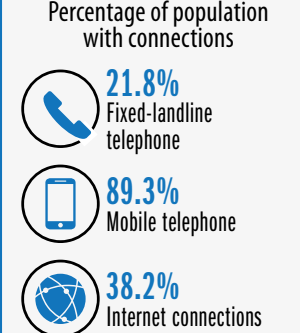


of households have refuse removed by municipality (weekly or less frequently)

Msunduzi's low access to refuse services reflects the city's high levels of informal and traditional housing.

## INFRASTRUCTURE

### ICT infrastructure 2011

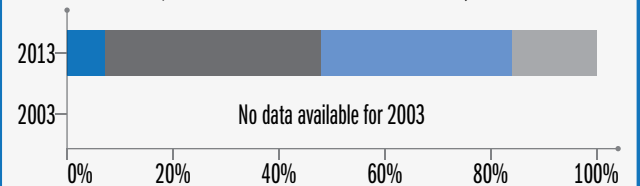


### Repairs and maintenance



### Mode of transport to work

In Msunduzi, 8 out of 10 people use a taxi or a private vehicle to move around the city.



"Other" transport modes are not included in the graph.

## CITIZEN ENGAGEMENT

### Voter registration/turnout

