

## PEOPLE AND HOUSEHOLDS

Size of city



Population density in 2011

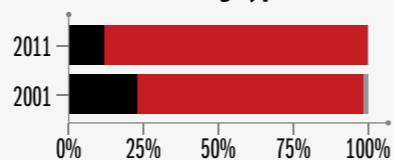


Nelson Mandela Bay has the lowest proportion of informal households compared to the other cities, having significantly reduced numbers between 2001 and 2011.

### Growth

	Population	No. households	Average number of people per household
2011	1 152 116	324 292	3.55
2001	1 005 779	260 779	3.86
1996	959 299	225 677	4.25

### Dwelling types



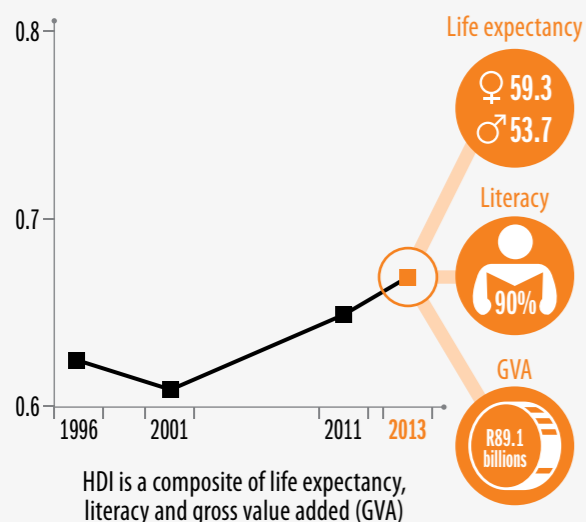
- Informal
- Formal
- Traditional

Go to [StepSA.org](http://StepSA.org) to see maps on how population density changes across the city.

## SOCIAL FABRIC

Nelson Mandela Bay's literacy level is comparable to the big metros. Life expectancy levels are the same as for Buffalo City.

### Human development index (HDI)

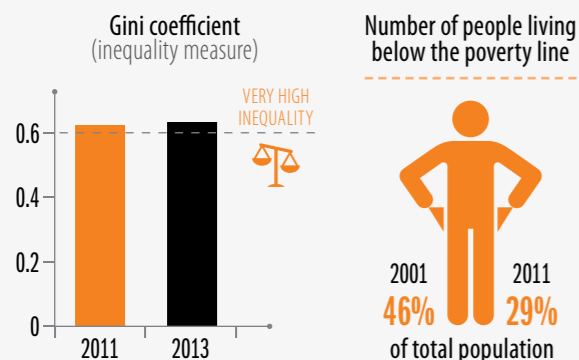


### Highest education level 2011



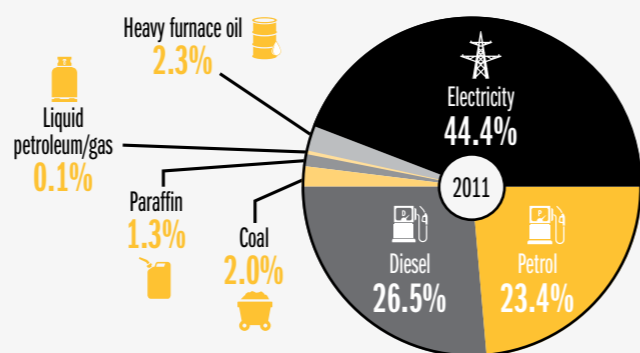
Urban safety is important for a city's social fabric; go to SCODA to access urban safety data for Nelson Mandela Bay.

### Levels of poverty

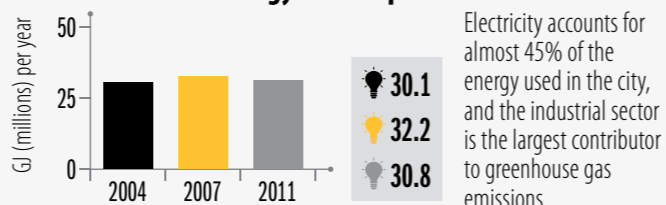


## SUSTAINABILITY

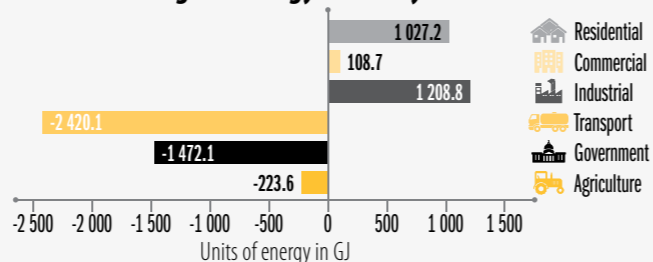
### Sources of fuel 2011



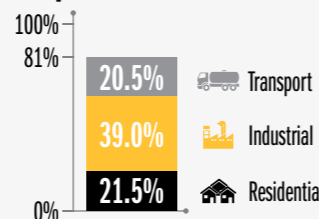
### Energy consumption



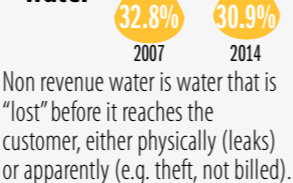
### Change in energy intensity 2007–2011



### Emissions: top three sectors in 2015

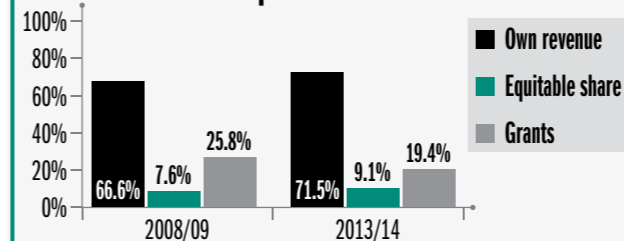


### Non revenue water

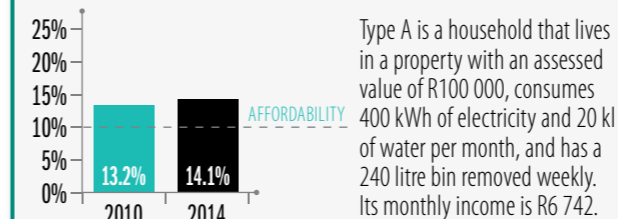


## CITY FINANCE

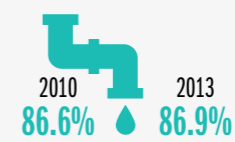
### Municipal revenue sources



### Affordability of municipal bills for type A households (municipal bill as % of benchmark income)



## SERVICE DELIVERY



of households have access to piped water inside dwelling/yard



of households have access to sanitation services\*

\* includes access to flush toilets, VIPs and pit toilets



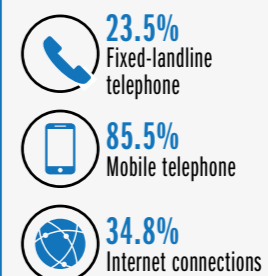
of households have refuse removed by municipality (weekly or less frequently)

Nelson Mandela Bay has increased access to basic services, especially access to sanitation and waste removal.

## INFRASTRUCTURE

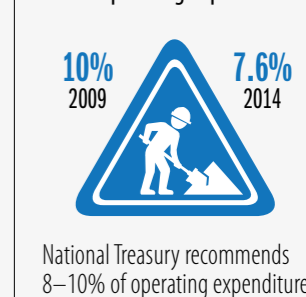
### ICT infrastructure 2011

Percentage of population with connections



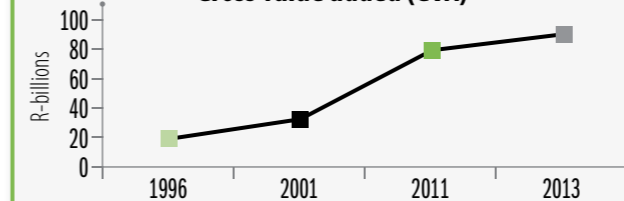
### Repairs and maintenance

% of operating expenditure



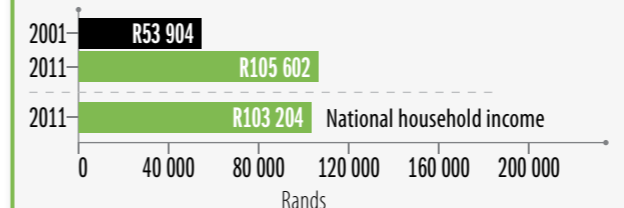
## ECONOMY

### Gross value added (GVA)



### Average household income

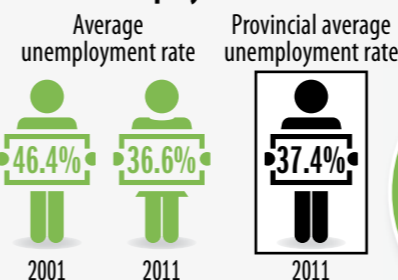
Nelson Mandela Bay's average household income and cost of living are comparable to eThekweni, but its economy is much smaller.



### Cost of living (based on a bundle of goods)



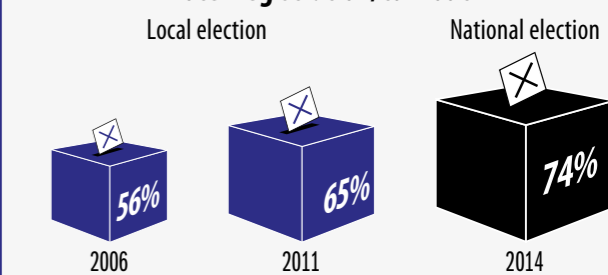
### Unemployment rate



Between 2001 and 2011, Nelson Mandela Bay's economy and average household incomes grew slower than any of the other cities.

## CITIZEN ENGAGEMENT

### Voter registration/turnout



Together with Cape Town, Nelson Mandela Bay had the highest voter turnout at local elections in 2011 (65%).